

NOTES:

1. MIN. PUSHOUT FORCE: 3 lbs.
2. HEIGHT VARIATION BETWEEN ANY TWO ROWS SHALL BE .010 MAX.
3. MAX. ALLOWABLE BOW: .003 IN/IN.
4. Δ REPRESENTS A CRITICAL DIMENSION FOR STATISTICAL PROCESS CONTROL USE.
5. LOCKING LEAD CRIMP ON EVEN POSITIONS TO APPEAR ON A POSITION ADJACENT TO PART ϕ ON BOTH ROWS. CRIMP ON ODD POSITIONS TO APPEAR ON THE POSITION AT PART ϕ ON BOTH ROWS.
6. STYLES -08 AND -15 ON STRAIGHT AND RA OPTIONS ARE NOT AVAILABLE WITH .318 POST ("B" DIM.).
7. ON STYLE -08-LA OPTION "B" DIM. TO BE .230±.008 [5.84:20]

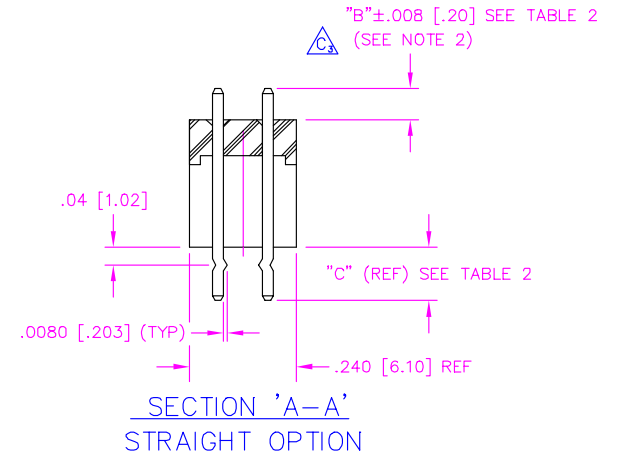
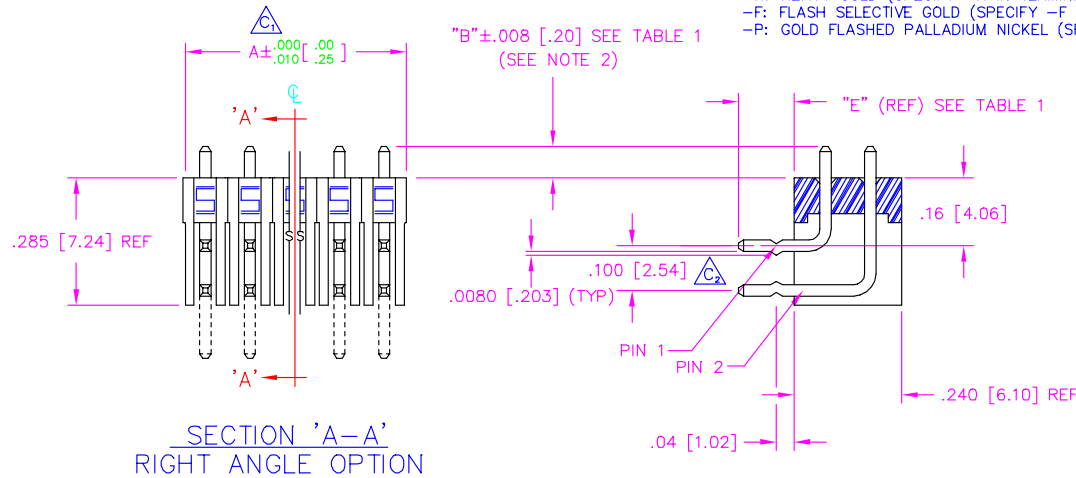
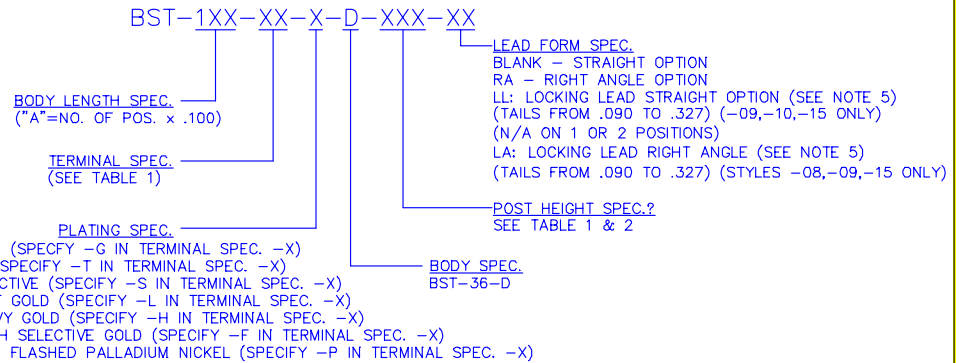


TABLE 1

LEAD STYLE	PIN 1	RIGHT ANGLE OPTION	PIN 2	"B"±.008 [.20]	"E" (REF) TAIL DIM WHEN POST IS .230 [5.84]	"B"±.008 [.20]	"E" (REF) TAIL DIM WHEN POST IS .318 [80.77]
-08	T-1S6-08-X-2		T-1S6-09-X-2	.230 [5.84] (SEE NOTE 7)	.090 [2.29]	.318 [8.08] (SEE NOTE 6)	N/A
-09	T-1S6-09-X-2		T-1S6-11-X-2		.290 [7.37]		.200 [5.08]
-10	T-1S6-10-X-2		T-1S6-12-X-2		.390 [9.91]		.300 [7.62]
-11	T-1S6-11-X-2		T-1S6-20-X-2		.490 [12.45]		.400 [10.16]
-12	T-1S6-12-X-2		T-1S6-13-X-2		.590 [14.99]		.500 [12.70]
-13	T-1S6-13-X-2		T-1S6-14-X-2		.790 [20.07]		.700 [17.78]
-15	T-1S6-15-X-2		T-1S6-10-X-2		.190 [4.83]		N/A
-20	T-1S6-20-X-2		T-1S6-19-X-2	.690 [17.53]	.600 [15.24]		

TABLE 2

LEAD STYLE	STRAIGHT OPTION	"B"±.008 [.20]	"C" (REF) TAIL DIM WHEN POST IS .230 [5.84]	"B"±.008 [.20]	"C" (REF) TAIL DIM WHEN POST IS .318 [80.77]
-09	T-1S6-09-X-2	.230 [5.84]	.215 [5.46]	.318 [8.08] (SEE NOTE 6)	.127 [3.23]
-10	T-1S6-10-X-2		.315 [8.00]		.227 [5.77]
-11	T-1S6-11-X-2		.415 [10.54]		.327 [8.31]
-12	T-1S6-12-X-2		.515 [13.08]		.427 [10.85]
-13	T-1S6-13-X-2		.715 [18.16]		.627 [15.93]
-14	T-1S6-14-X-2		.915 [23.24]		.827 [21.01]
-15	T-1S6-15-X-2		.115 [2.92]		N/A
-19	T-1S6-19-X-2		.815 [20.70]		.727 [18.47]
-20	T-1S6-20-X-2		.615 [15.62]		.527 [13.39]

Do not scale from this print

PROPRIETARY NOTE
 THIS DOCUMENT CONTAINS INFORMATION CONFIDENTIAL AND PROPRIETARY TO SAMTEC INC. AND SHALL NOT BE REPRODUCED OR TRANSMITTED TO OTHERS OR USED FOR ANY PURPOSE OTHER THAN THAT FOR WHICH IT WAS OBTAINED WITHOUT THE EXPRESSED WRITTEN CONSENT OF SAMTEC INC.

MISC/MKTG
BST-MKT

520 PARK EAST BLVD. NEW ALBANY, INDIANA 47150
 PHONE (812) 944-6733 P.O. BOX 1147
 CODE 55322

MADE BY: T.YOUNG 2-15-85	ENG. APPROVAL TMH	BST-1XX-XX-X-D-XXX-XX SHEET 1 OF 1
CHECKED BY: WILLIAMS 2-15-85		

PLOT SCALE 1=2