

REV. AF

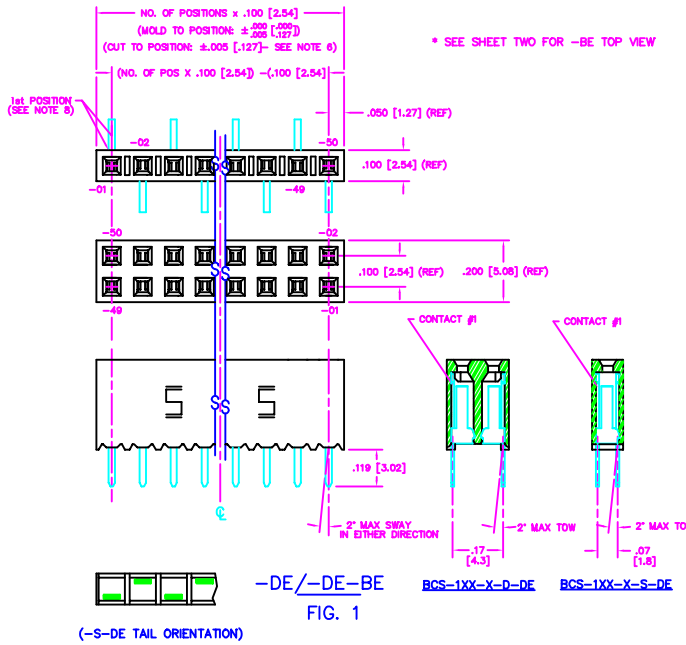


TABLE 1

ENTRY SPEC	BODY SPEC	CONTACT #1	CONTACT #2
-S-DE (SEE FIG.1)	SSM-XX-S	C-95-01-X	-----
-D-DE (SEE FIG.1)	SSM-XX-D	C-95-01-X	-----
-S-TE (SEE FIG.3)	SSM-XX-S	C-95-09-X	-----
-D-TE (SEE FIG.3)	SSM-XX-D	C-95-09-X	-----
-S-HE (SEE FIG.2)	BCH-XX-S	C-58-05-X	-----
-D-HE (SEE FIG.2)	BCH-XX-D	C-58-04-X	C-58-03-X
-S-PE (SEE FIG.4)	SSM-XX-S	C-95-10-X	-----
-D-PE (SEE FIG.4)	SSM-XX-D	C-95-10-X	-----
-S-DE-BE (SEE FIG.1)	SSM-XX-S-BE	C-95-01-X	-----
-D-DE-BE (SEE FIG.1)	SSM-XX-D	C-95-01-X	-----
-S-PE-BE (SEE FIG.4)	SSM-XX-S-BE	C-95-10-X	-----
-D-PE-BE (SEE FIG.4)	SSM-XX-D	C-95-10-X	-----

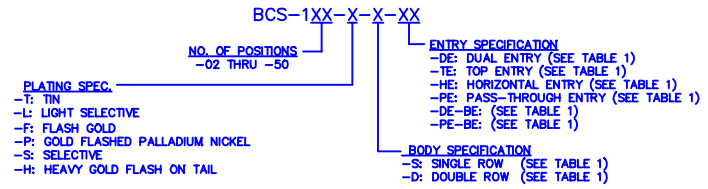
UNLESS OTHERWISE NOTED TOLERANCES ARE: DIMENSIONS ARE IN INCHES

ONE PLACE DECIMALS: ± .1 [2.5] THREE PLACE DECIMALS: ± .005 [0.127] ANGLES ± 2°

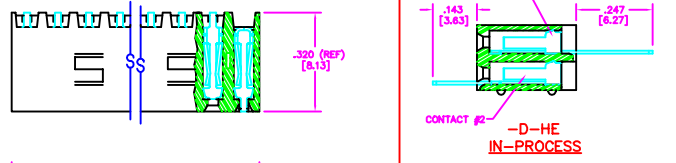
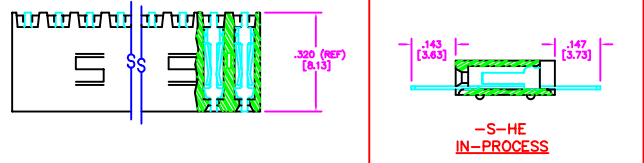
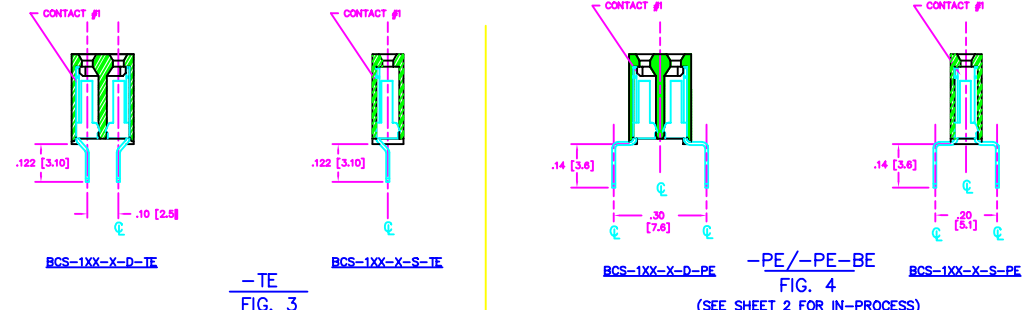
TWO PLACE DECIMALS: ± .01 [0.25] FOUR PLACE DECIMALS: ± .0020 [0.0508]

TITLE: BOX CONNECTOR SOCKET STRIP

DWG NO: BCS-1XX-X-X-XX SHEET 1 OF 2

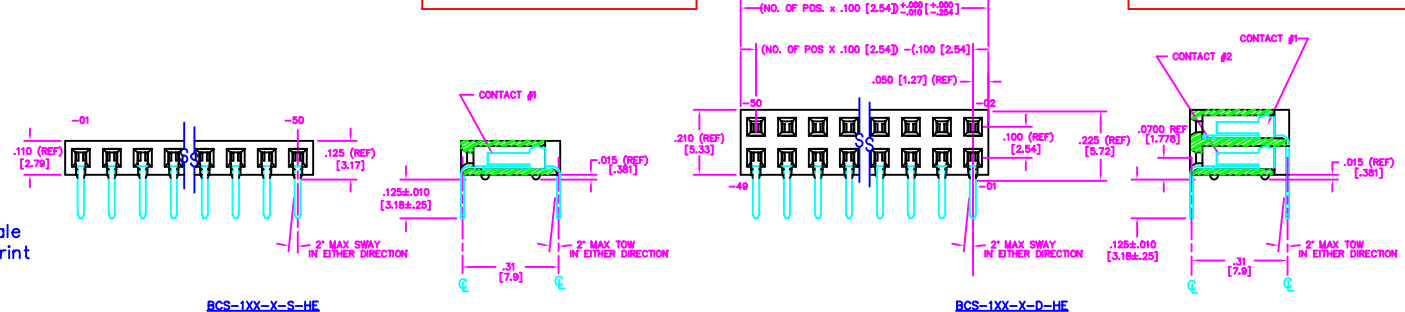


ALL DIMS. DIFFERENT AS SHOWN, OTHERWISE SAME AS FIGURE 1



- NOTES:
- PUSHOUT FORCE TO BE: 1 lb. MIN.
  - ▲ REPRESENTS CRITICAL DIM. FOR STATISTICAL PROCESS CONTROL.
  - CONTACT MATERIAL: PHOSPHOR BRONZE.
  - INSULATOR MATERIAL: BLACK, GLASS-FILLED LCP.
  - [ ] DIMENSIONS ARE IN MILLIMETERS.
  - MINIMUM WALL THICKNESS ON CUT PARTS: .009.
  - CUT PARTS TO BE SYMMETRICAL ABOUT C.
  - 1st POSITION WILL ALWAYS POINT UP ON TOP VIEW AS SHOWN.
  - 1 THROUGH 4 POSITIONS ARE TO BE LAYERED PACKAGED, 5 THROUGH 50 POSITIONS ARE TO BE TUBED FOR THIS PART NUMBER.

PART NUMBER	TUBE	PLUG
BCS-S-DE	PT-3-24-01-01	TP-03 (2)
BCS-D-DE	PT-1-24-01-15	TP-03 (2)
BCS-S-TE	PT-1-24-01-24	TP-24 (2)
BCS-D-TE	PT-1-24-01-22	TP-03 (2)
BCS-S-HE	PT-1-24-04-38	TP-03 (2)
BCS-D-HE	PT-1-24-03-29	TP-07 (2)
BCS-S-PE	PT-1-24-01-15	TP-03 (2)
BCS-D-PE	PT-1-24-01-15	TP-03 (4)
BCS-S-DE-BE	PT-3-24-01-01	TP-03 (2)
BCS-D-DE-BE	PT-1-24-01-15	TP-03 (2)
BCS-S-PE-BE	PT-1-24-01-15	TP-03 (2)
BCS-D-PE-BE	PT-1-24-01-15	TP-03 (2)



Do not scale from this print

PROPRIETARY INFO

THIS DRAWING AND ALL INFORMATION CONTAINED HEREIN ARE THE PROPERTY OF SAMTEC CORPORATION. NO PART OF THIS DRAWING OR INFORMATION IS TO BE REPRODUCED, COPIED, OR TRANSMITTED IN ANY FORM OR BY ANY MEANS, ELECTRONIC OR MECHANICAL, INCLUDING PHOTOCOPYING, RECORDING, OR BY ANY INFORMATION STORAGE AND RETRIEVAL SYSTEM, WITHOUT THE WRITTEN PERMISSION OF SAMTEC CORPORATION.

PLOT SCALE: 1=2

EXP/PRO/ASSEMBLY/100 BCS-ASM

**samtec**

810 PROGRESS BLVD. NEW ALBANY, INDIANA 47150  
PHONE: (317) 844-8733 P.O. BOX 1147  
CODE 55322

MADE BY: KOLB 9-12-91

BCS-1XX-X-X-XX SHEET 1 OF 2